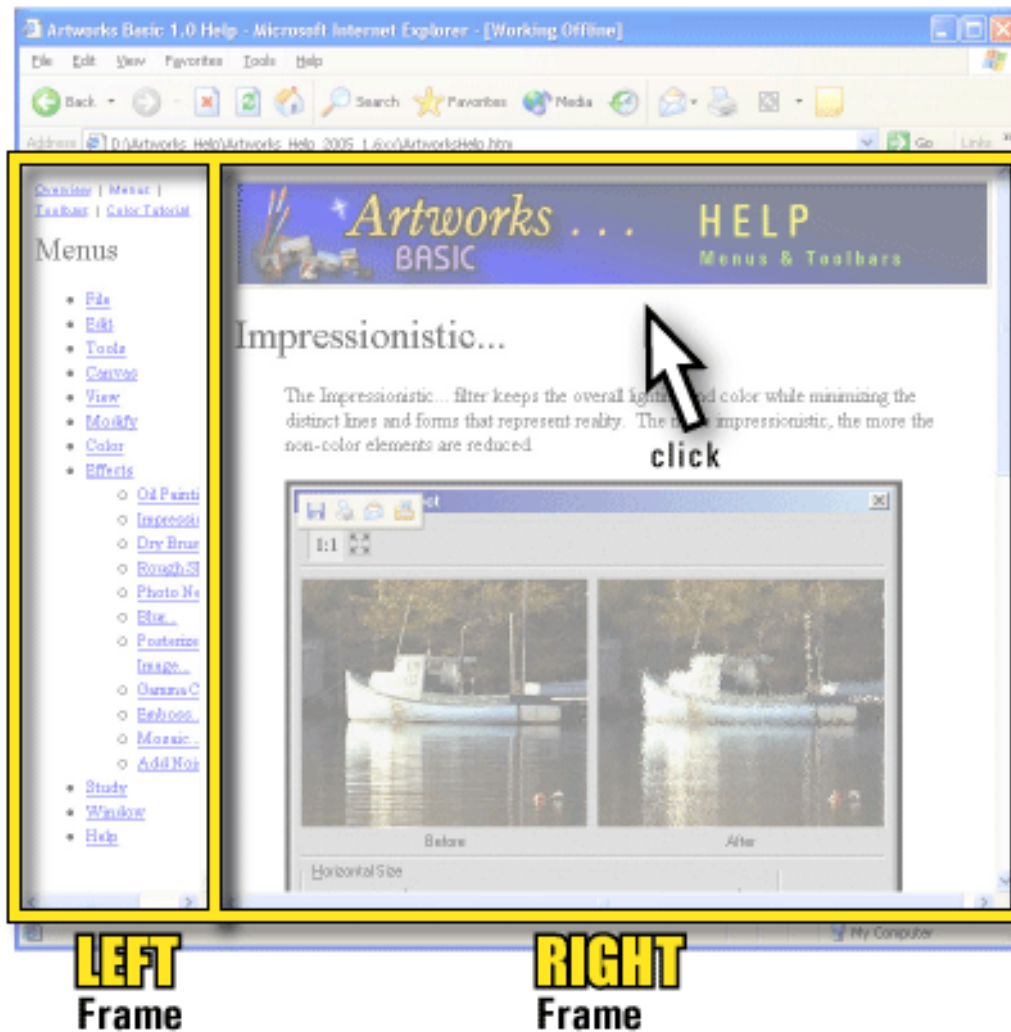




Printing Artworks Help Pages

The Artworks Basic Help document is organized into LEFT and RIGHT web frames (see diagram below).



The **LEFT** Frame is the "index" (see left), and the **RIGHT** Frame is the actual "Help Information" which is what you are reading now. Standard Web Frames are great for navigation, but tricky for printing.

To print the "Help Information" pages, do these four things:

FIRST - **click** anywhere in the **RIGHT** Frame (clicking activates it for printing),

SECOND - **select** the "**Print...**" or "**Print Preview...**" menu (under File),

THIRD - **select** the option "**Only the selected frame**". When the "Print" or "Print Preview" window opens, there are three Options for printing Web frames... "As laid out on screen", "Only the selected frame", and "All frames individually".

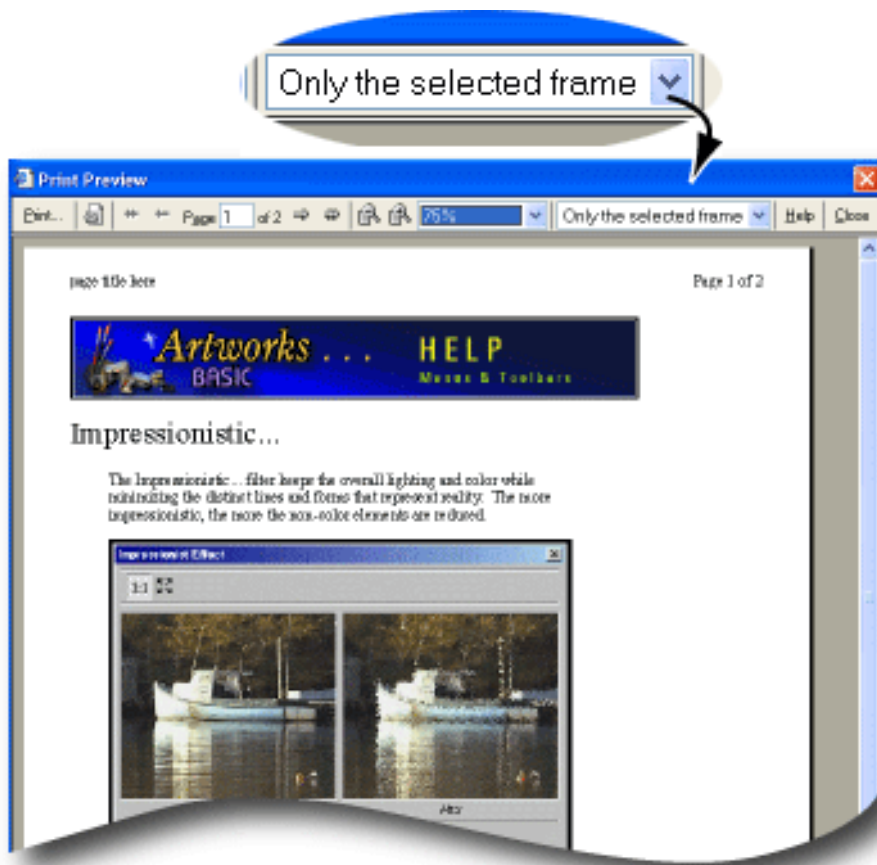
FOURTH - **click** the **Print** button

By clicking inside the **RIGHT** Frame first, you are telling your WEB browser that you want to *make it active* for printing (instead of the **LEFT** Frame which is active by default). By selecting "**Only the selected frame**" when in the printer window opens, you are telling the WEB browser that you only want to print the information from the frame you just activated for printing.

Depending on whether you use the "**Print Preview...**" or "**Print...**" method to print your pages, here's what to look for when the Printer window opens. If you are new to printing from Web Frames, we suggest that you try the "Print Preview..." method until you are comfortable with how it works.

If you select, Print Preview...

Look for the popup menu in the top right side of the Print Preview window (see diagram below). **Click** on the popup, **select** "Only the selected frame", then **click** the "Print..." button.

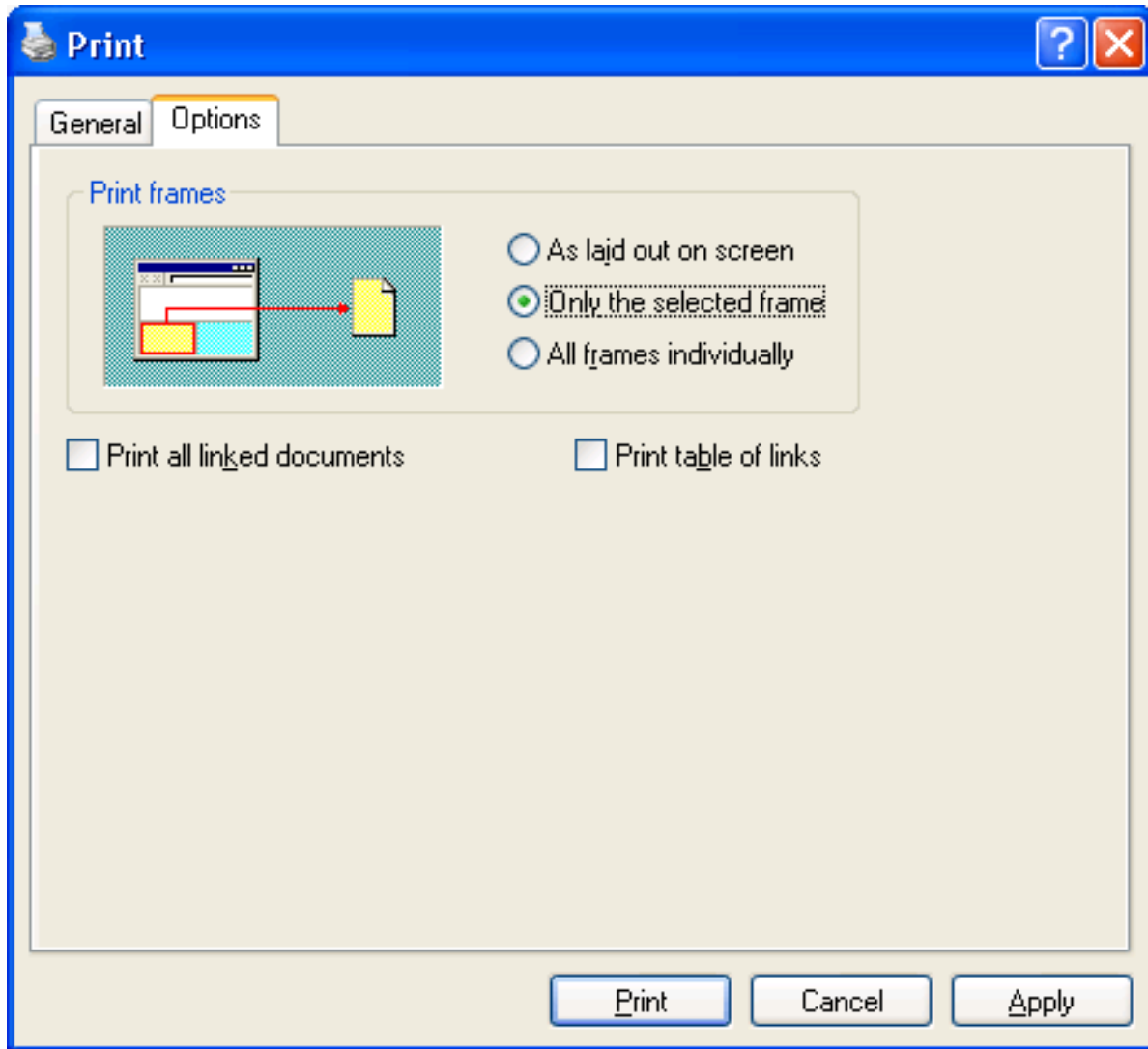


The advantage of the "Print Preview..." method, is that you can preview the pages before printing them. Also, with this method, you have one more opportunity to enter the pages you want in the "Print range" **after** you click the "Print..." button. That may not be the case with the second method below.

If you select, Print...

When the Print window opens for printing, the first thing to do is enter the "Print range". We suggest that you enter just **one** page until you understand how this works because you can end up printing 15 or 20 pages from a single frame without meaning to.

Next, **look for** and **select** the button "Only the selected frame" (found under **Options**). Once selected, **click** the "Print" button (see diagram below).



Printing Help Pages... [Top](#)

© 2005 Copyright Artellmedia Inc. All Rights Reserved.
"G-Lab", "G-Lab Color(s)", and "RealTime CST" are trademarks of Gagnon Studios, Bedford , NS CANADA .
All Rights Reserved.